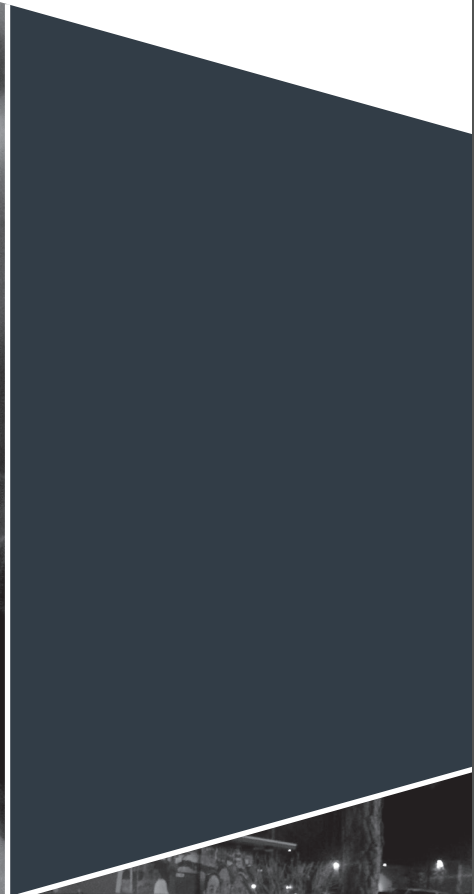




CAL STATE LA
CALIFORNIA STATE UNIVERSITY, LOS ANGELES



SUMMARY OF KEY FINDINGS

SPRING 2017 EVALUATION REPORT SERIES

from the City of Los Angeles Mayor's Office of Gang Reduction and Youth Development



harder  co | community
research

USC University of
Southern California

UCLA

prepared by

THE GRYD RESEARCH AND EVALUATION TEAM HOUSED AT CALIFORNIA STATE UNIVERSITY, LOS ANGELES.

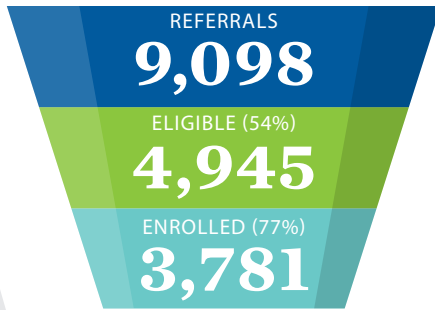
This report series was funded by the City of Los Angeles contract number C-128086 ("Research Consulting for GRYD") with California State University, Los Angeles.

Permission to use these data was provided by the City of Los Angeles Mayor's Office of Gang Reduction and Youth Development (GRYD). Any opinions, findings, conclusions or recommendations expressed in this study, however, are those of the author(s) and do not necessarily reflect the views of the GRYD Office.

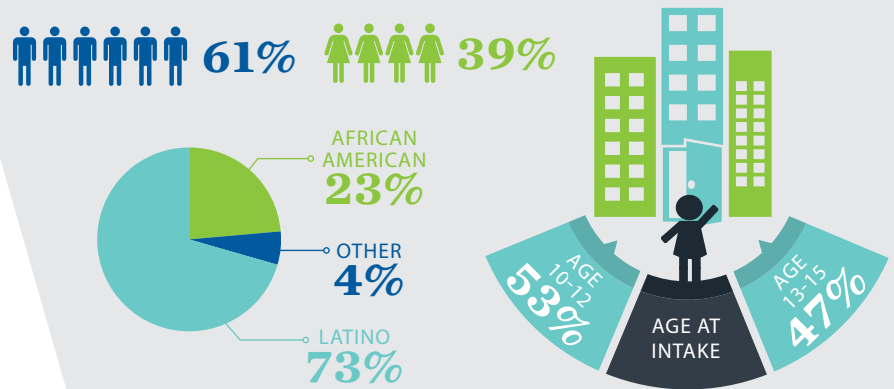


GRYD GANG PREVENTION

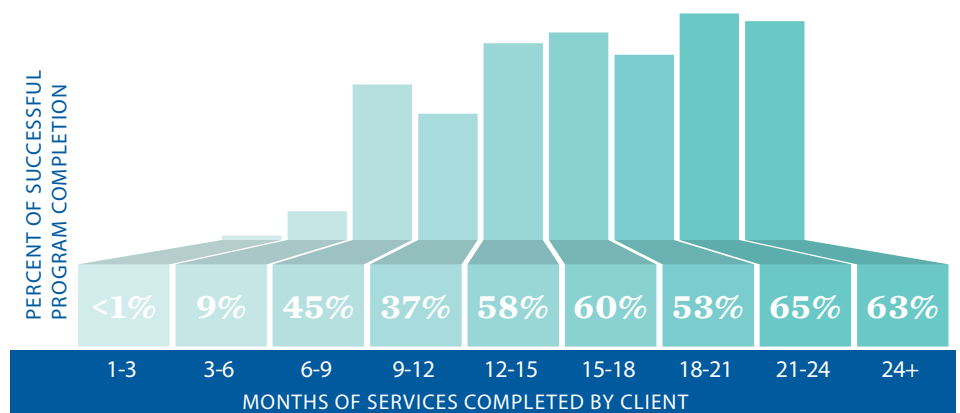
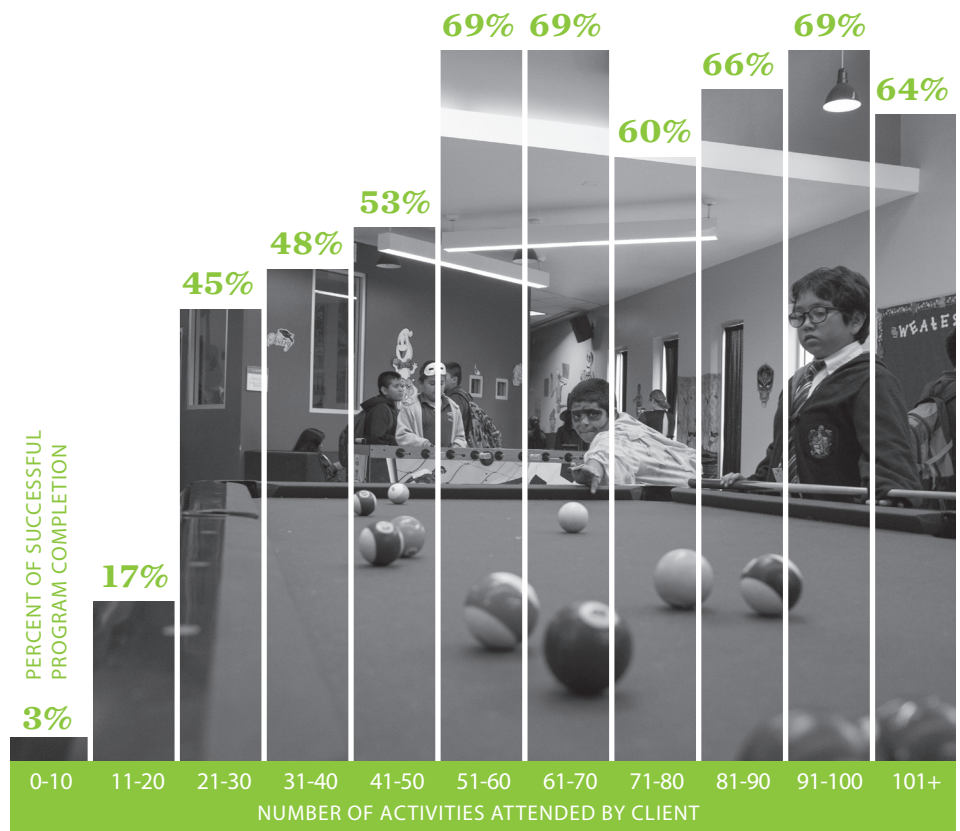
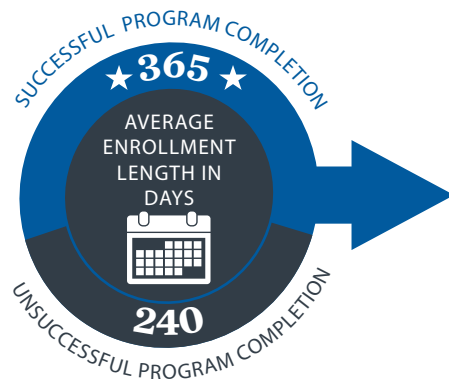
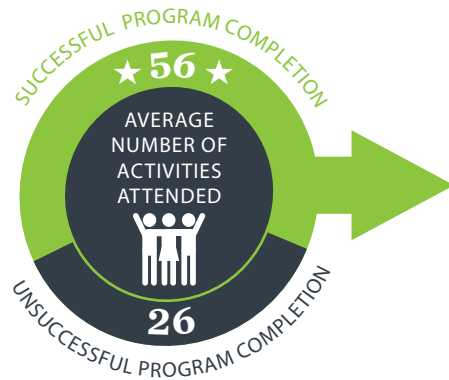
REFERRAL AND ENROLLMENT
from September 1, 2011 – March 31, 2016



GRYD PREVENTION CLIENT PROFILE



PROGRAM COMPLETION



GRYD GANG PREVENTION

CHANGES IN YSET RISK FACTORS

AFTER RECEIVING GRYD PREVENTION SERVICES FOR 6 MONTHS



58%

OF CLIENTS SAW ENOUGH **reduction in risk level** THAT THEY WERE NO LONGER ELIGIBLE FOR SERVICES.



ANTISOCIAL TENDENCIES



CRITICAL LIFE EVENTS



GUILT NEUTRALIZATION



IMPULSIVE RISK TAKING



WEAK PARENTAL SUPERVISION



PEER DELINQUENCY



NEGATIVE PEER INFLUENCE

COMPLETED SUCCESSFULLY [PERCENT CHANGE AFTER 6 MONTHS]

-28%
CHANGE

-33%
CHANGE

-24%
CHANGE

-26%
CHANGE

-36%
CHANGE

-19%
CHANGE

-27%
CHANGE

COMPLETED UNSUCCESSFULLY [PERCENT CHANGE AFTER 6 MONTHS]

-20%
CHANGE

-25%
CHANGE

-17%
CHANGE

-20%
CHANGE

-25%
CHANGE

-13%
CHANGE

-20%
CHANGE

CHANGES OBSERVED AMONG GRYD PREVENTION CLIENTS COMPARED TO HIGH-RISK YOUTH ON PROBATION IN LOS ANGELES COUNTY

Analyses were conducted that examined changes in risk over time among a sample of GRYD Prevention clients and a comparison group of high-risk youth on Probation in LA County enrolled in a recent study funded by the National Institute for Justice.

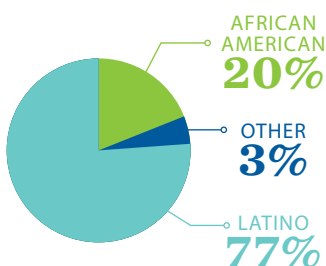
COMPARISON GROUP DESCRIPTION

1,023 GRYD Prevention Clients

60%

40%

GRYD SERVICES

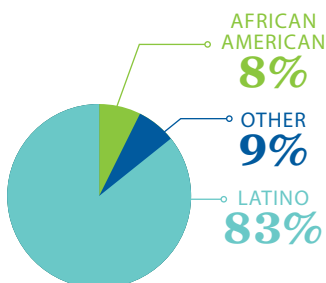


179 County Youth

70%

30%

GRYD SERVICES

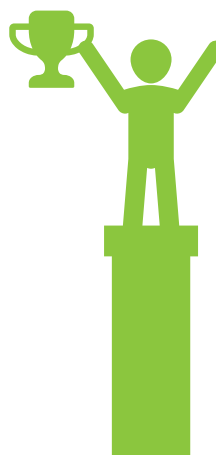


COMPARISON GROUP RESULTS

GRYD CLIENTS REPORTED

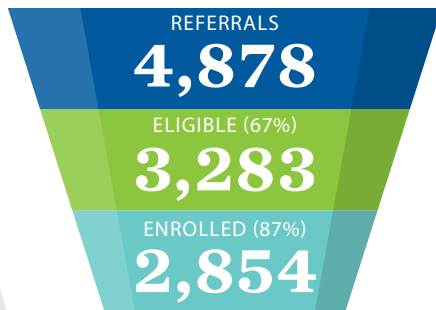
fewer risk factors at YSET-R THAN THE COUNTY YOUTH

The average number of risk factors

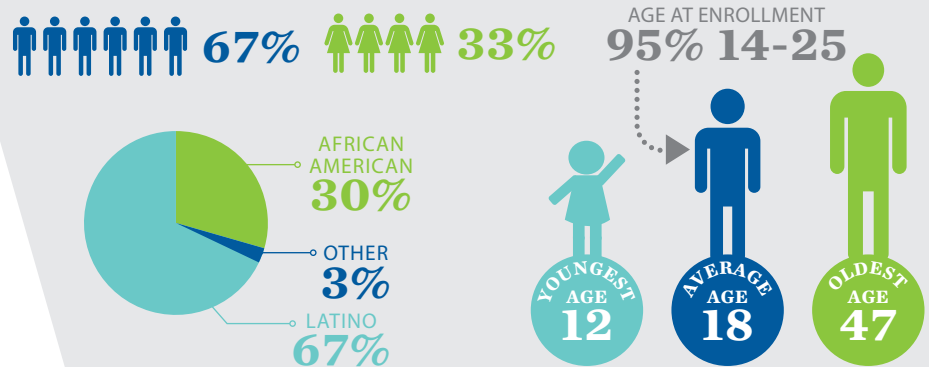


GRYD GANG INTERVENTION FAMILY CASE MANAGEMENT

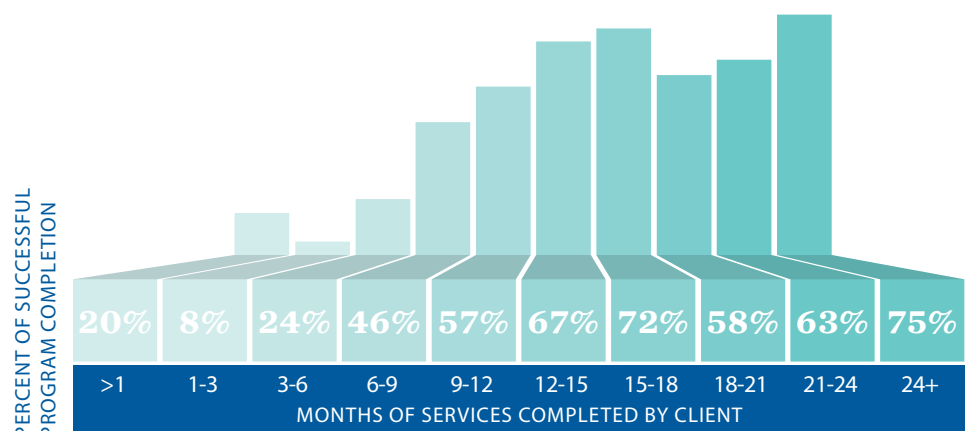
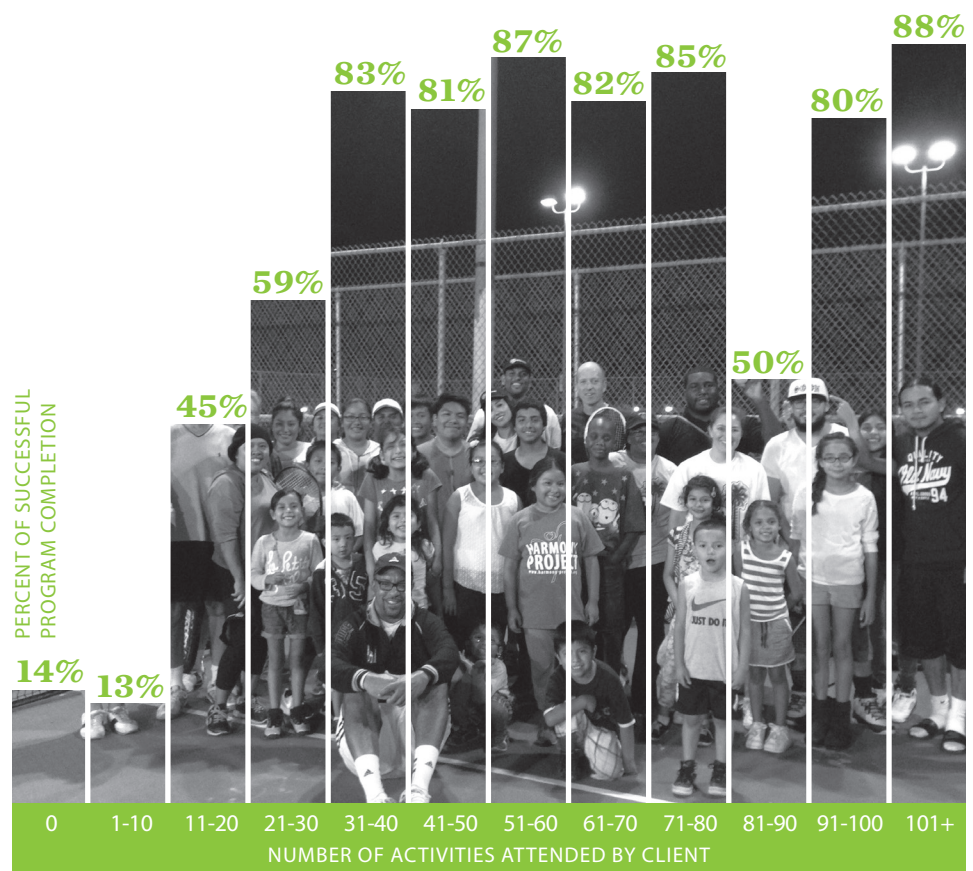
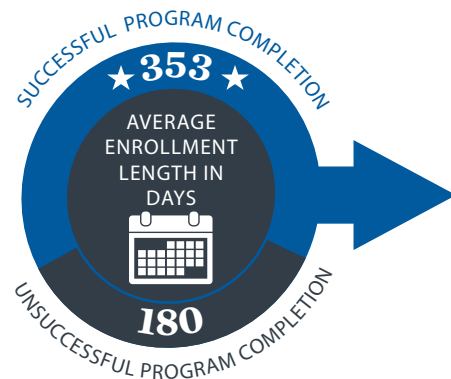
REFERRAL AND ENROLLMENT
from February 1, 2012 – May 16, 2016



GRYD INTERVENTION FAMILY CASE MANAGEMENT CLIENT PROFILE

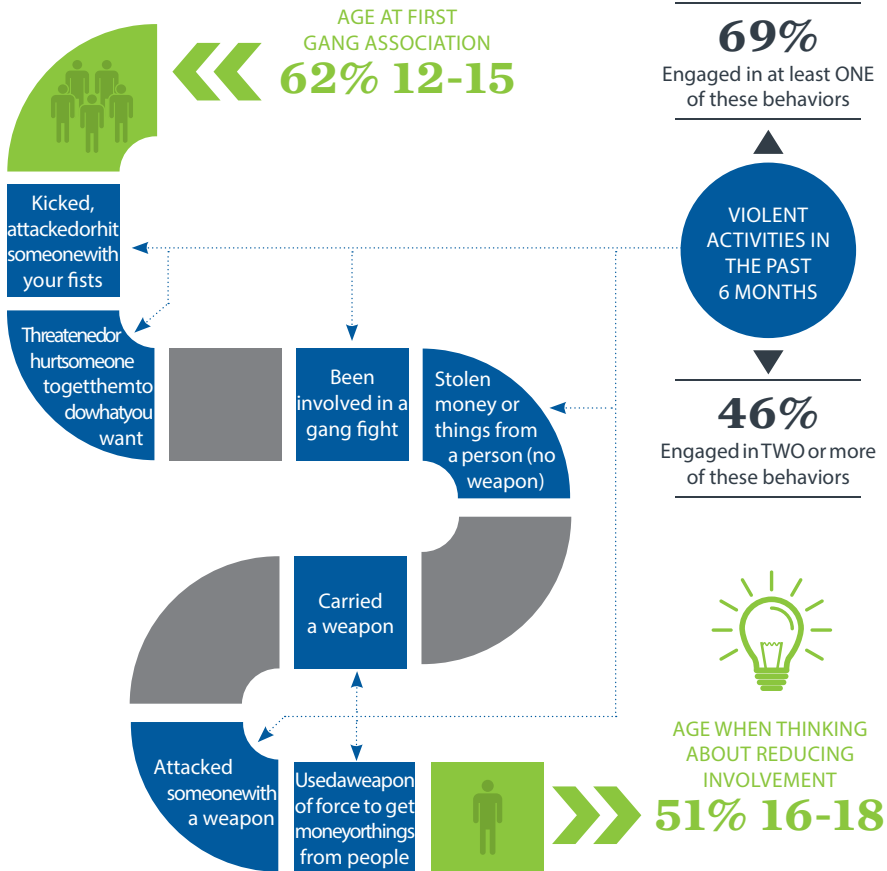


PROGRAM COMPLETION



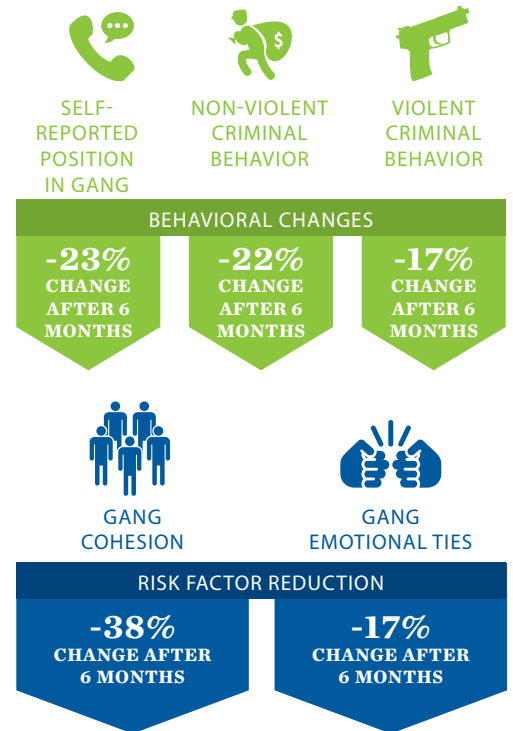
GRYD GANG INTERVENTION FAMILY CASE MANAGEMENT

CLIENT CHARACTERISTICS AT ENROLLMENT

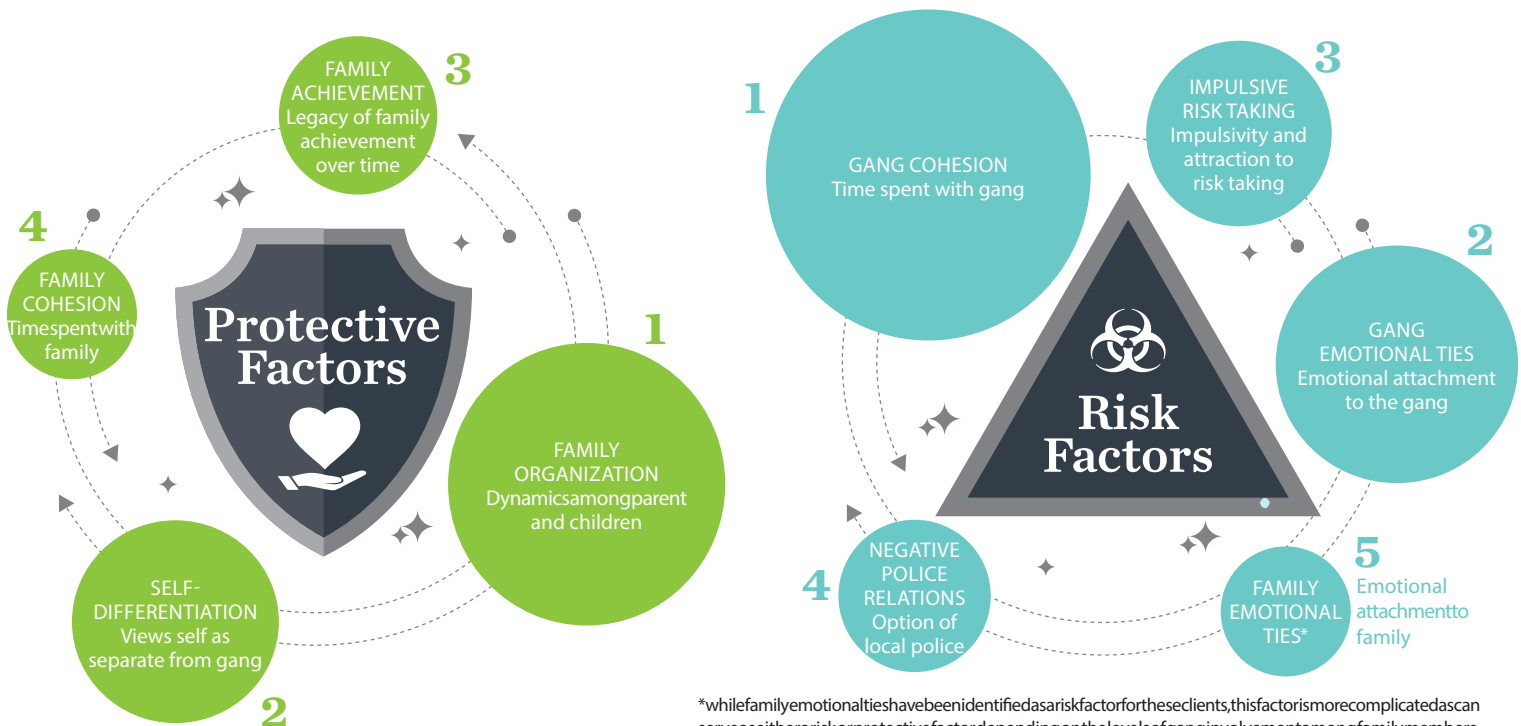


CHANGES IN BEHAVIOR AND RISK FACTORS

After receiving GRYD FCM services for 6 months clients showed reductions in participation in crime and violence and changes in gang identity.



KEY PROTECTIVE AND RISK FACTORS FOR GANG IDENTITY AND INVOLVEMENT IN VIOLENCE



GRYD INTERVENTION INCIDENT RESPONSE & GANG CRIME

GRYD INCIDENT RESPONSE (IR) CHARACTERISTICS

January 1, 2014 – December 31, 2015 • Matched LAPD and GRYD IR data

NUMBER OF INCIDENTS
FOR WHICH GRYD IR WAS
NOTIFIED

 **1,536**

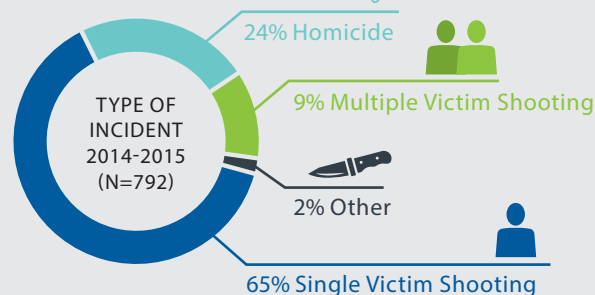
NUMBER OF INCIDENTS WITH
SOME TYPE OF ACTION TAKEN
BY GRYD IR

 **792 (52%)**

OF INCIDENTS WITH ACTION
TAKEN, NUMBER OF INCIDENTS
INSIDE OF GRYD IR ZONES

 **596 (75%)**

TYPE OF INCIDENTS



ACTIONS TAKEN AND CONTACTS MADE IN THE FIRST 24 HRS FOLLOWING AN INCIDENT

2014-2015 GRYD IR Regional Program Coordinators

%	PRIMARY ACTIONS TAKEN FOLLOWING AN INCIDENT
96%	Phone calls / Emails
15%	Deployed to the scene, hospital, or community
12%	Other actions

%	PRIMARY CONTACT MADE FOLLOWING AN INCIDENT
96%	Contact LAPD
19%	Other Contact
4%	Contact Council Office

2014-2015 GRYD IR Community Intervention Workers

%	PRIMARY ACTIONS TAKEN FOLLOWING AN INCIDENT
88%	Deployed to the scene, hospital, or community
80%	Phone calls / Emails
67%	Canvassed the community / Outreach
59%	Controlled the diffusion of rumors
35%	Connected victim / Victim's family to services

%	PRIMARY CONTACT MADE FOLLOWING AN INCIDENT
43%	Contact Victim's Family
31%	Contact with Victim or Perpetrator's Gang
30%	Contact LAPD
12%	Other Contact
6%	Contact Council Office

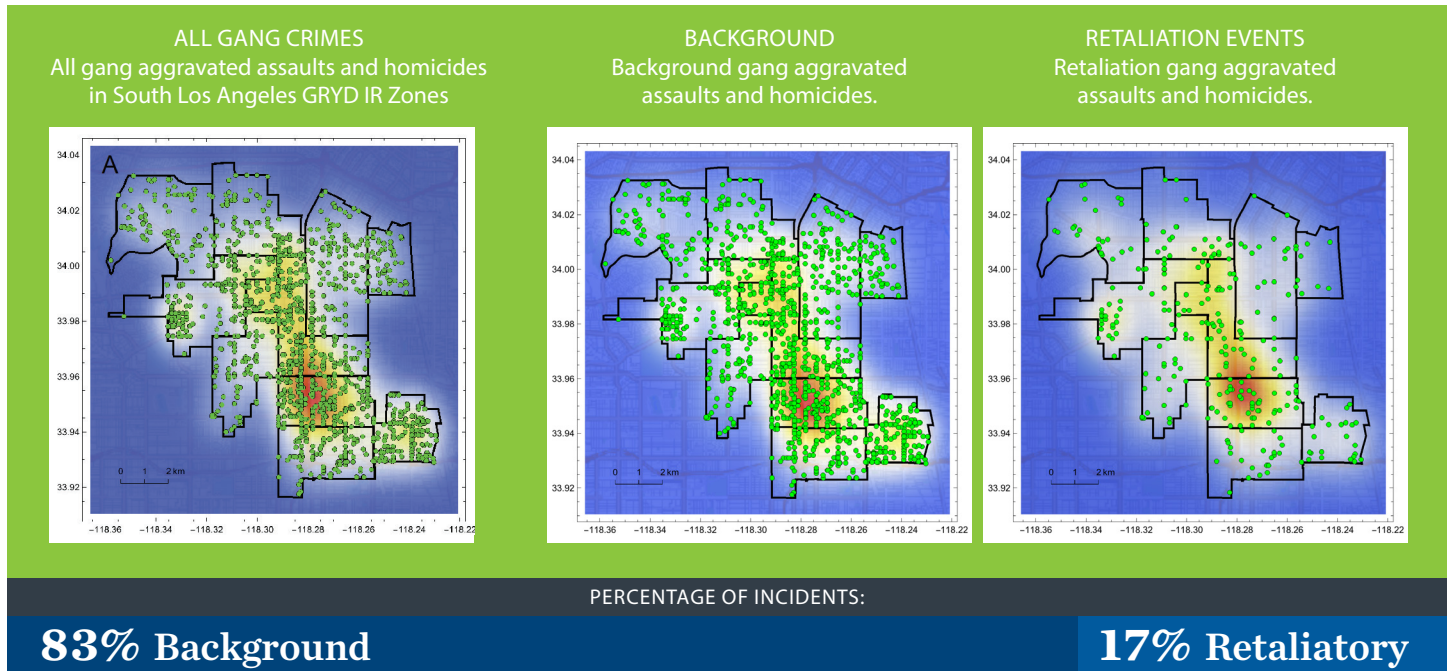


GRYD INTERVENTION INCIDENT RESPONSE & GANG CRIME

DEFINING RETALIATORY GANG CRIME

Retaliatory gang crimes are most frequently defined based on qualitative evidence such as knowledge about the suspects or victims involved and the history of interactions between individuals or groups. This research defines a retaliation in statistical terms as any gang crime that can be shown to be causally related to one more prior gang crimes. Non-retaliatory, background crimes are therefore gang crimes that are statistically independent of any prior event.

2014-2015 South Los Angeles GRYD IR Zones



ASSESSING THE IMPACT OF GRYD IR ON RETALIATORY GANG CRIME

Between January 1, 2014 and December 31, 2015



GRYD INTERVENTION INCIDENT RESPONSE & GANG CRIME

ESTIMATES OF THE AVERAGE NUMBER OF GANG RETALIATIONS WERE MADE FOR TWO SCENARIOS, BOTH INDICATING THAT WHEN NOTIFIED OF INCIDENTS,

GRYD IR has a measurable impact on the number of gang retaliations:

RETALIATORY INCIDENTS KNOWN ONLY TO THE LAPD

For every 100 gang crimes known to both LAPD + GRYD IR, there are an additional 13.5 retaliations known to LAPD alone.



For every 100 gang crimes where GRYD IR is not notified of the initial incident, there are an additional 19.3 retaliations known to LAPD alone.



Summary of these findings is that when GRYD IR knows about the initial incident, retaliation is 30% less common.



RETALIATORY INCIDENTS KNOWN ABOUT BY BOTH LAPD + GRYD IR

For every 100 gang crimes known to LAPD + GRYD IR there are 0.2 additional retaliations known to both.



For every 100 gang crimes where GRYD IR is not notified of the initial incident, there are 4.8 additional retaliations known to both.



Summary of these findings is that when GRYD IR knows about the initial incident, retaliation is 96% less common.



GRYD INTERVENTION

INCIDENT RESPONSE & GANG CRIME

RETALIATORY INCIDENTS WHEN GRYD IR RECEIVES INITIAL INCIDENT NOTIFICATION

For every 100 gang crime notifications received by LAPD + GRYD IR there are on average 13.6 violent retaliations.



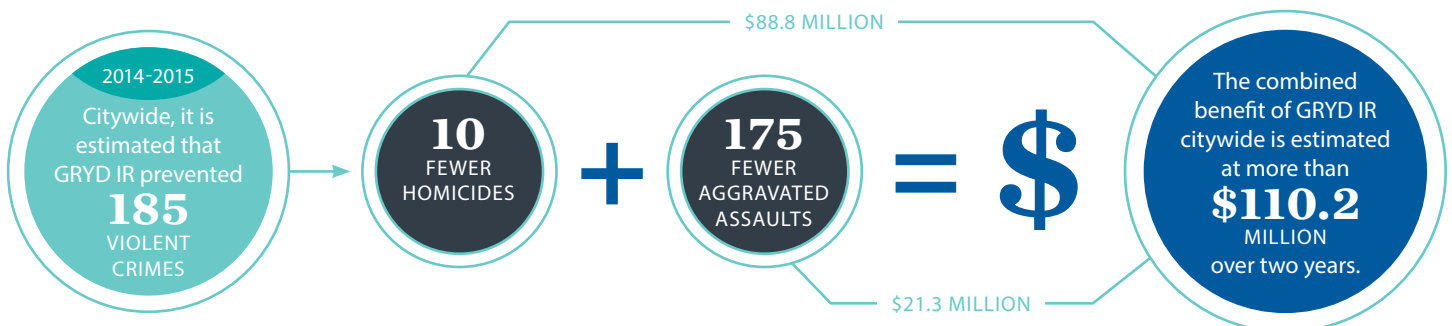
For every 100 gang crimes where GRYD does not receive notification there are on average 24.0 violent retaliations.



Summary of these findings is that when GRYD IR knows about the initial incident, there are 43.2% fewer retaliations.

43.2%
FEWER
RETALIATIONS

THE COSTS OF GANG CRIME



GRYD SUMMER NIGHT LIGHTS (SNL)

SNL Overview

FROM 2008-2016, THERE HAVE BEEN APPROXIMATELY



5,650,283
SITE VISITS

3,563,052
MEALS SERVED



SNL is held in
32 CITY PARKS
historically impacted
by gang-related
violence



Operates between
the hours of **7:00 PM**
TO 11:00 PM during
summer months



Offers **VIOLENCE**
REDUCTION programming
and **COMMUNITY**
ENGAGEMENT activities

SNL 2016 A SUMMER OF TRANSFORMATIONS

TOTAL SITE
VISITS ESTIMATE
690,523



VISIT AVERAGE
ESTIMATE AT 32 SNL SITES
21,578



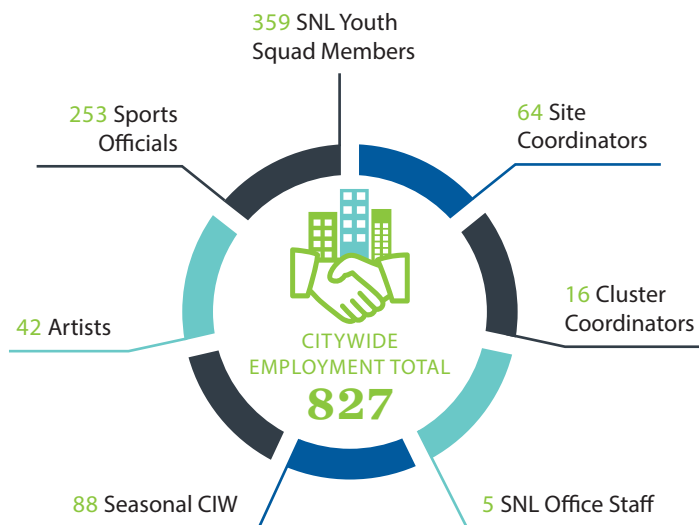
MEALS SERVED
431,577



HEALTHY OPTIONS
Such as turkey burgers,
chicken breast, low-sugar drink
mix, and fresh produce.



EMPLOYMENT OPPORTUNITIES



GRYD SUMMER NIGHT LIGHTS (SNL)

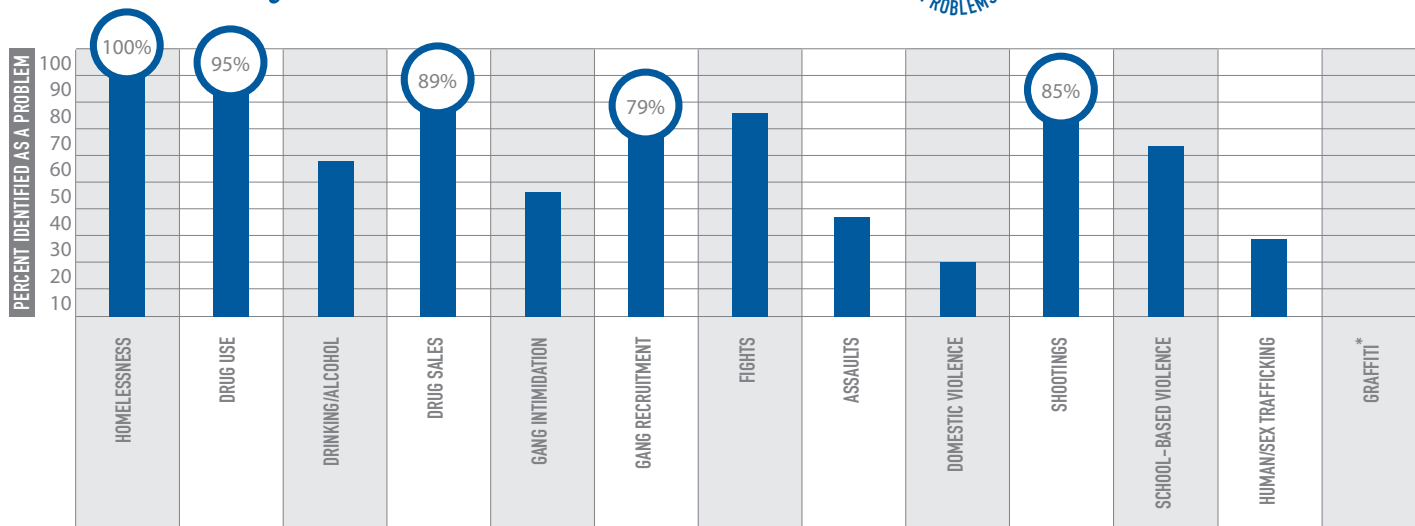
PROBLEMS FACED BY COMMUNITIES

During community feedback forums at 5 parks, residents of the community attending SNL programming and Youth Squad hired for SNL for the summer of 2016 were asked to rate possible issues as being a “big problem”, a “minor problem”, or “not a problem” in the community.

Community Residents

■ PERCENT OF PROBLEM (MINOR OR BIG)

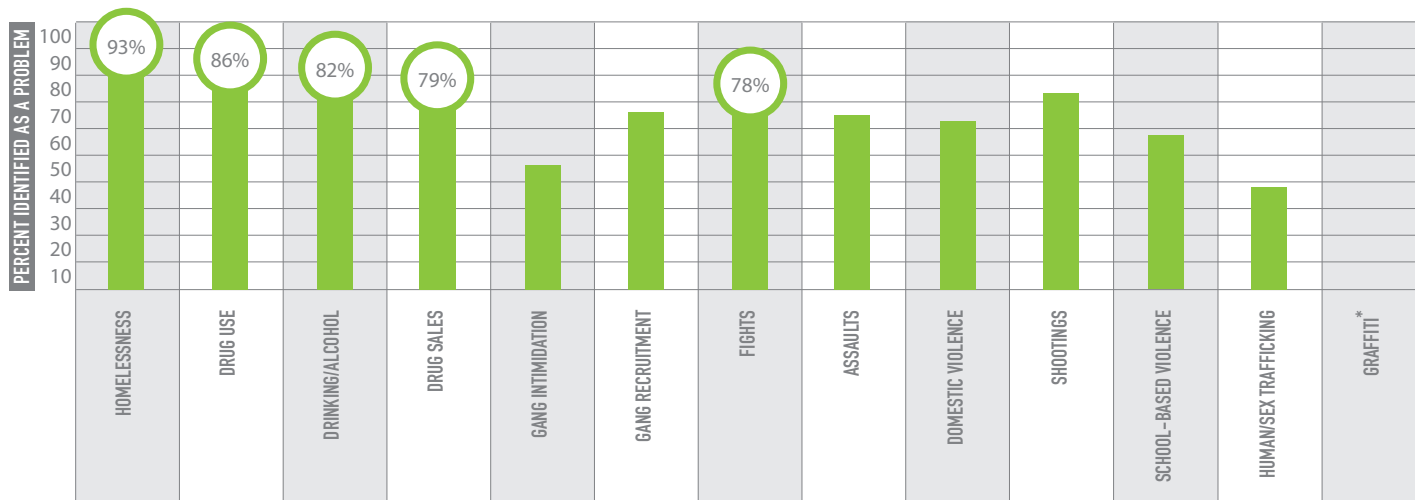
TOP
5
PROBLEMS



Youth Squad

■ PERCENT OF PROBLEM (MINOR OR BIG)

TOP
5
PROBLEMS



Community Intervention Workers (CIW)

CIW were also asked about the main issues in and around SNL parks during focus groups.

■ CIW IDENTIFIED AS A GENERAL PROBLEM

■ CIW EXPRESSED SERIOUS CONCERN



*This category was not asked about from Community Residents nor Youth Squad.

“

*This program helps you immediately;
it's like a family
and you're not alone. There's always a solution to the problem and it give you more hope. It's given my children and myself more self-esteem. I have more self-esteem than I used to.*

- PARENT PARTICIPANT

”

“

We trust our case managers
and they help us.

- YOUTH PARTICIPANT

”

creating a community

“

*I was going to quit school but
they encouraged me
to stay in.*

- YOUTH PARTICIPANT

”

vital support

ongoing commitment

“

It is life-changing.

I came here to look for a job. They put me and my husband in touch with someone...and we actually got to work. Now we have our house, a car -we're doing really well. I feel blessed and grateful for the program.

- YOUTH PARTICIPANT

”

GRYD

“

*Let's say I wanted to join a gang and be a gang member...
by going to this program it'll like help me*

by preventing that - not being a gangster.

- YOUTH PARTICIPANT

”

“

We don't see them as case managers. We see them as family. They really care.

We receive a lot of support and help.

It's the trust that we have with them; the support that they offer.

- PARENT PARTICIPANT

”

working with families

