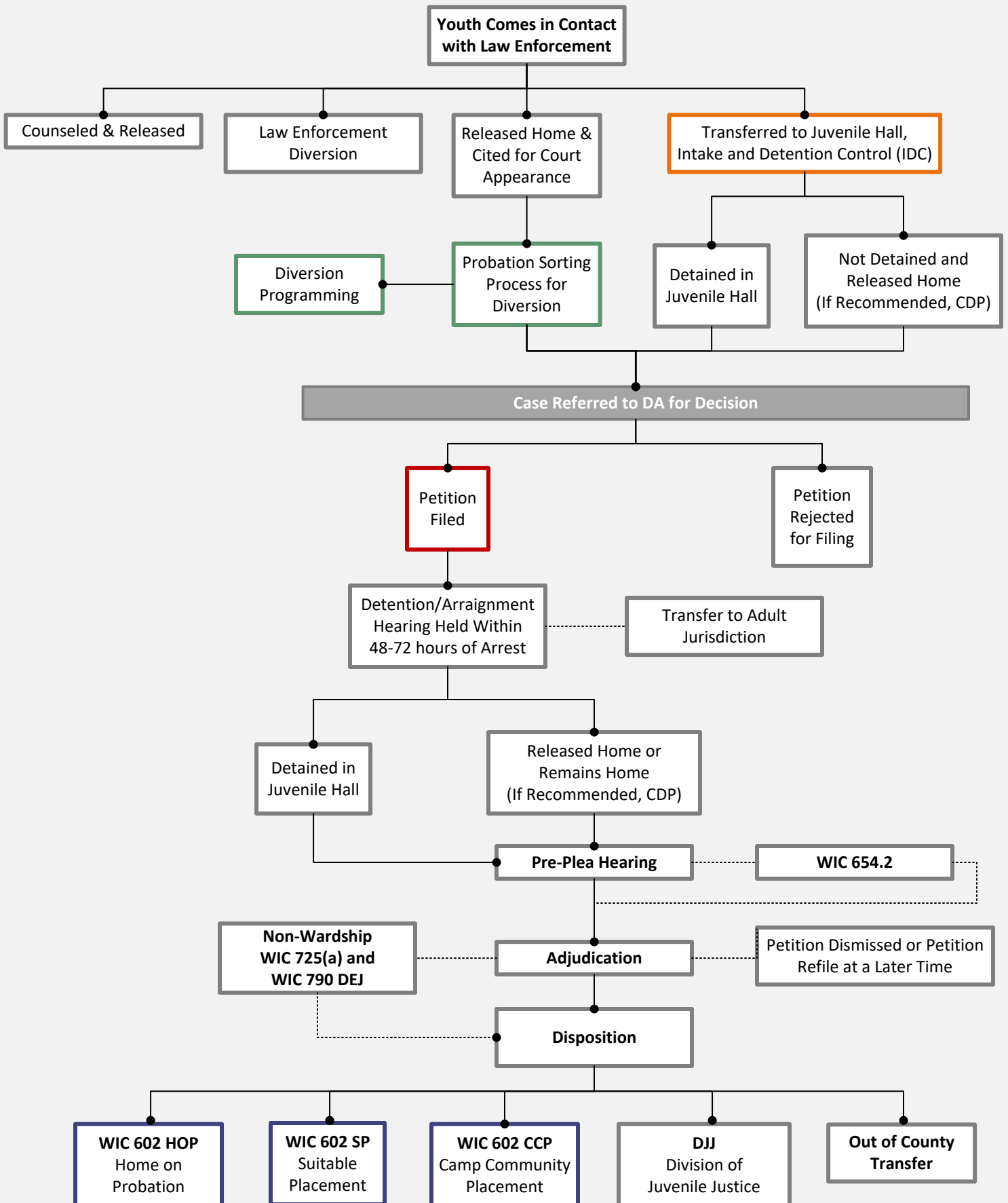
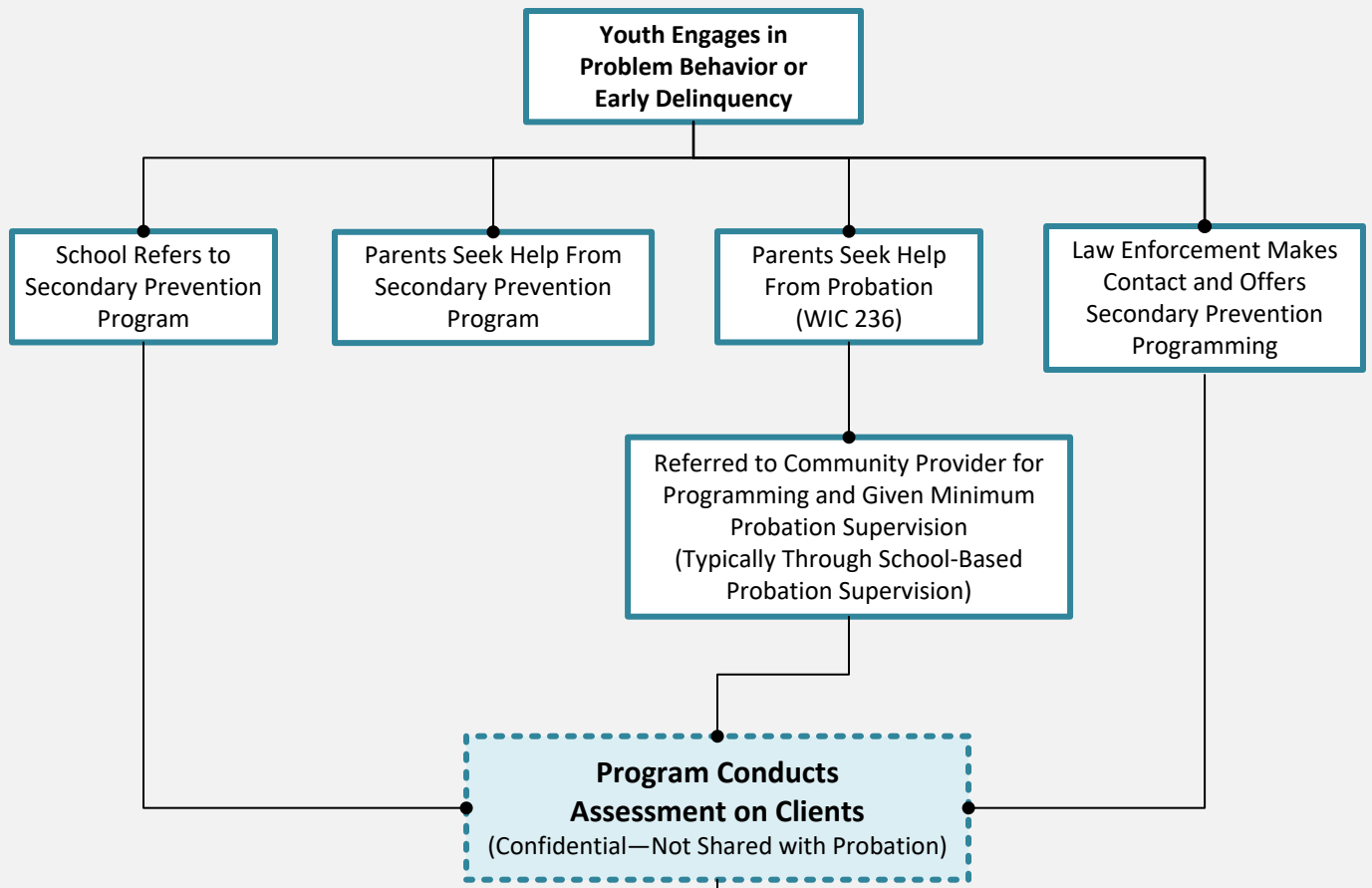


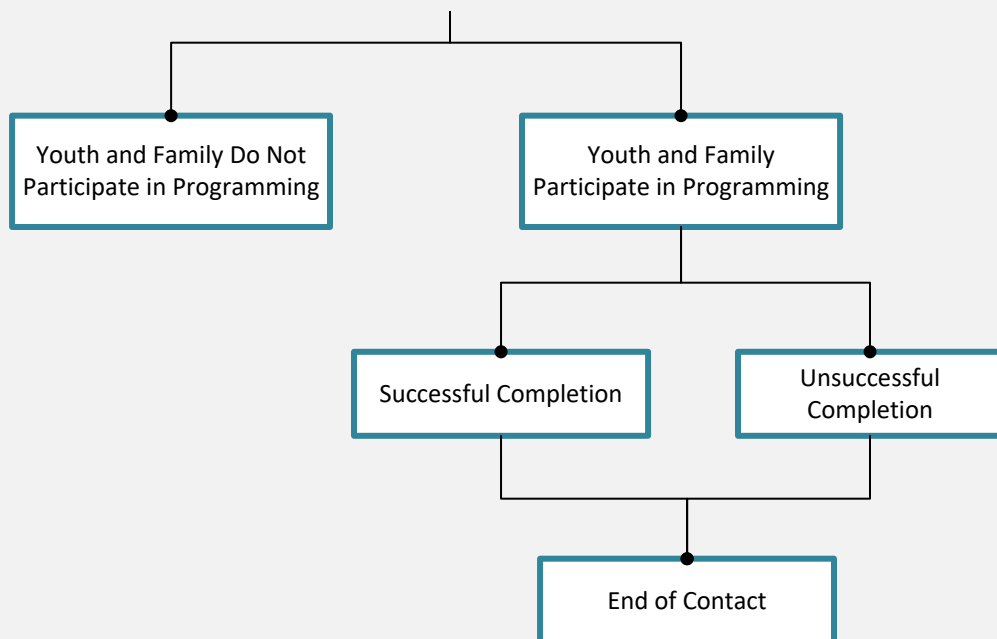
OVERVIEW OF THE LOS ANGELES JUVENILE JUSTICE DECISION MAKING PROCESS



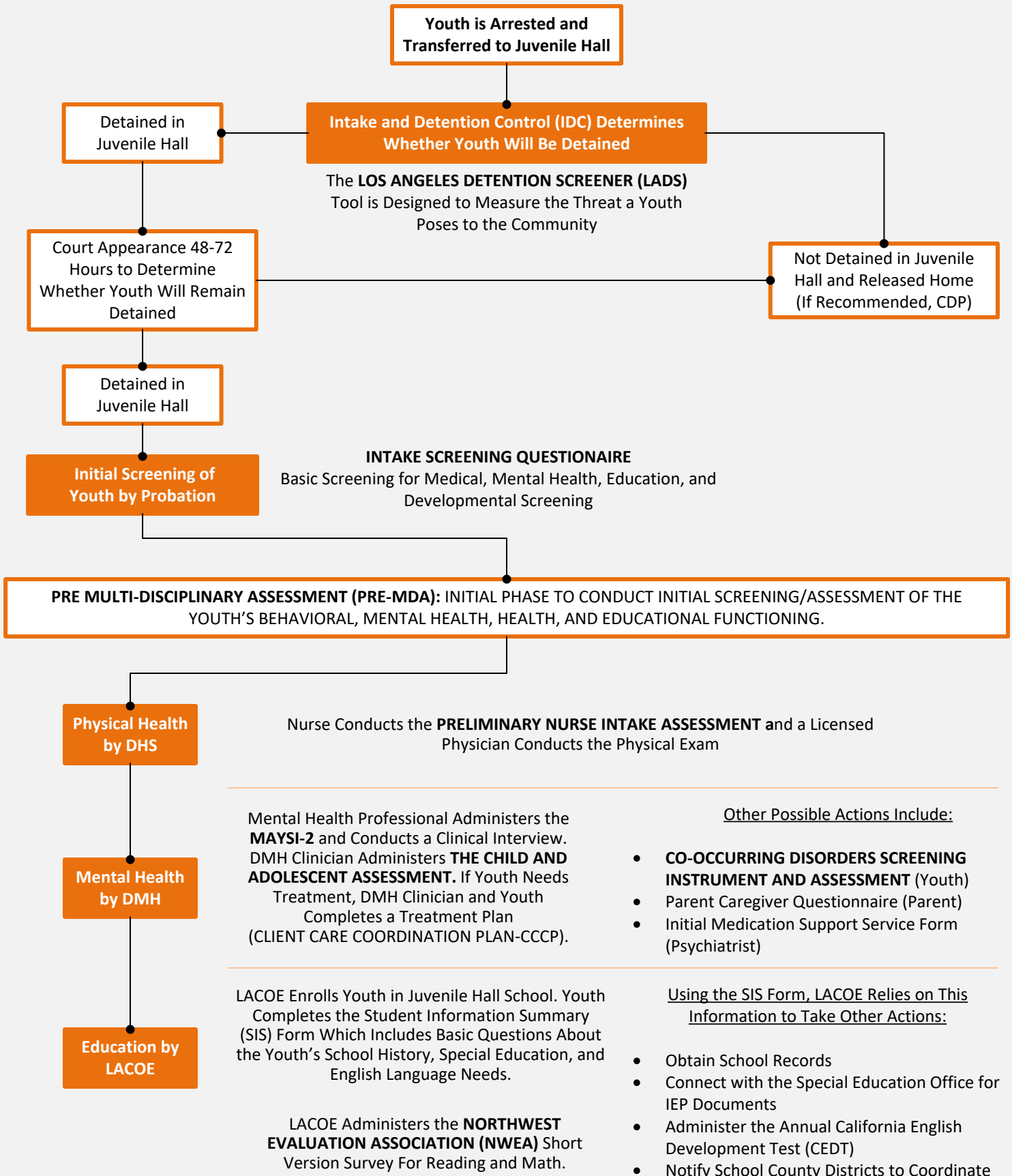
USE OF SCREENING AND ASSESSMENT TOOLS IN SECONDARY PREVENTION



**SCREENING & ASSESSMENT DEPENDS ON
PROGRAM PROCESS**

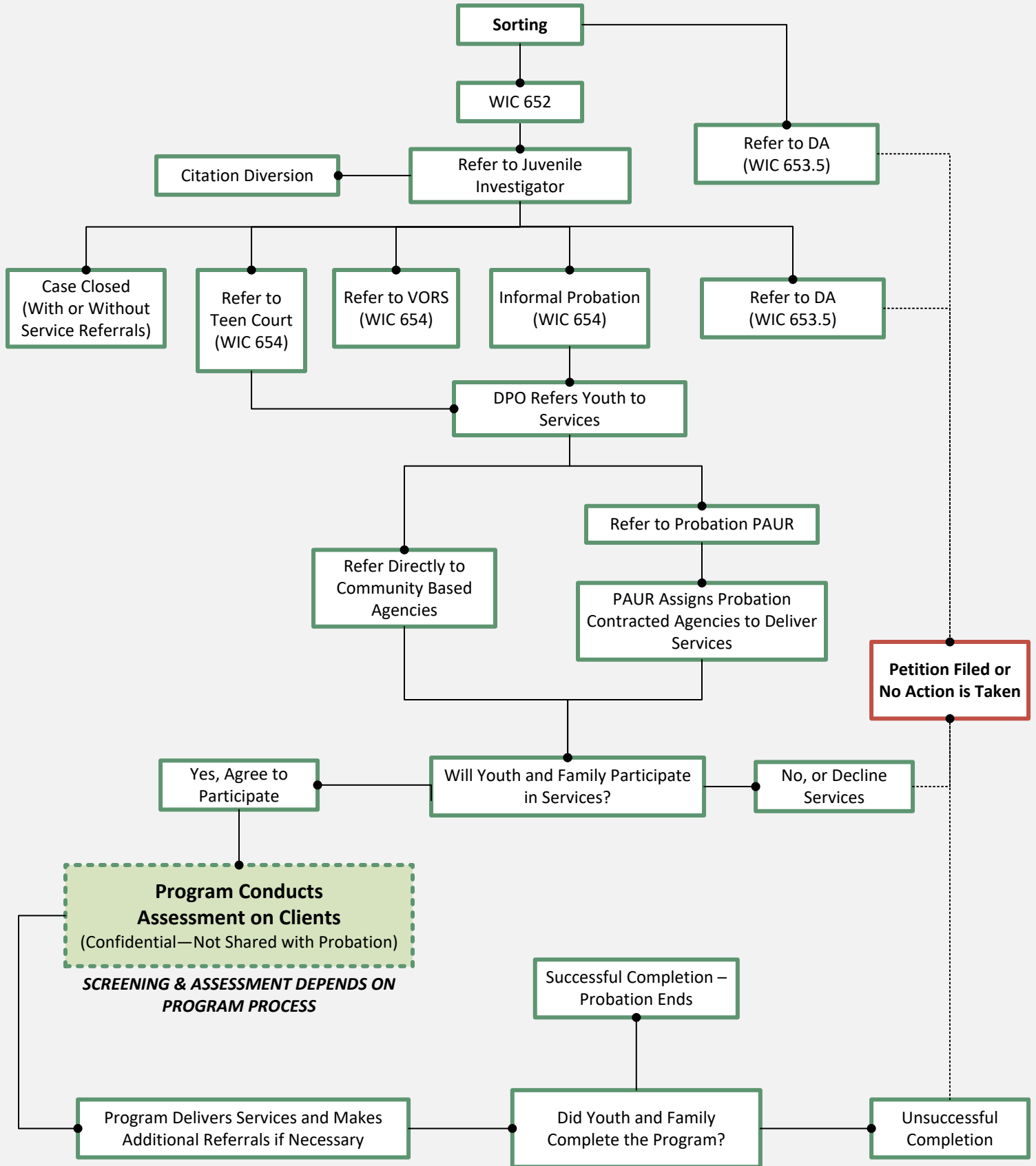


USE OF SCREENING AND ASSESSMENT TOOLS IN JUVENILE HALL DETENTION

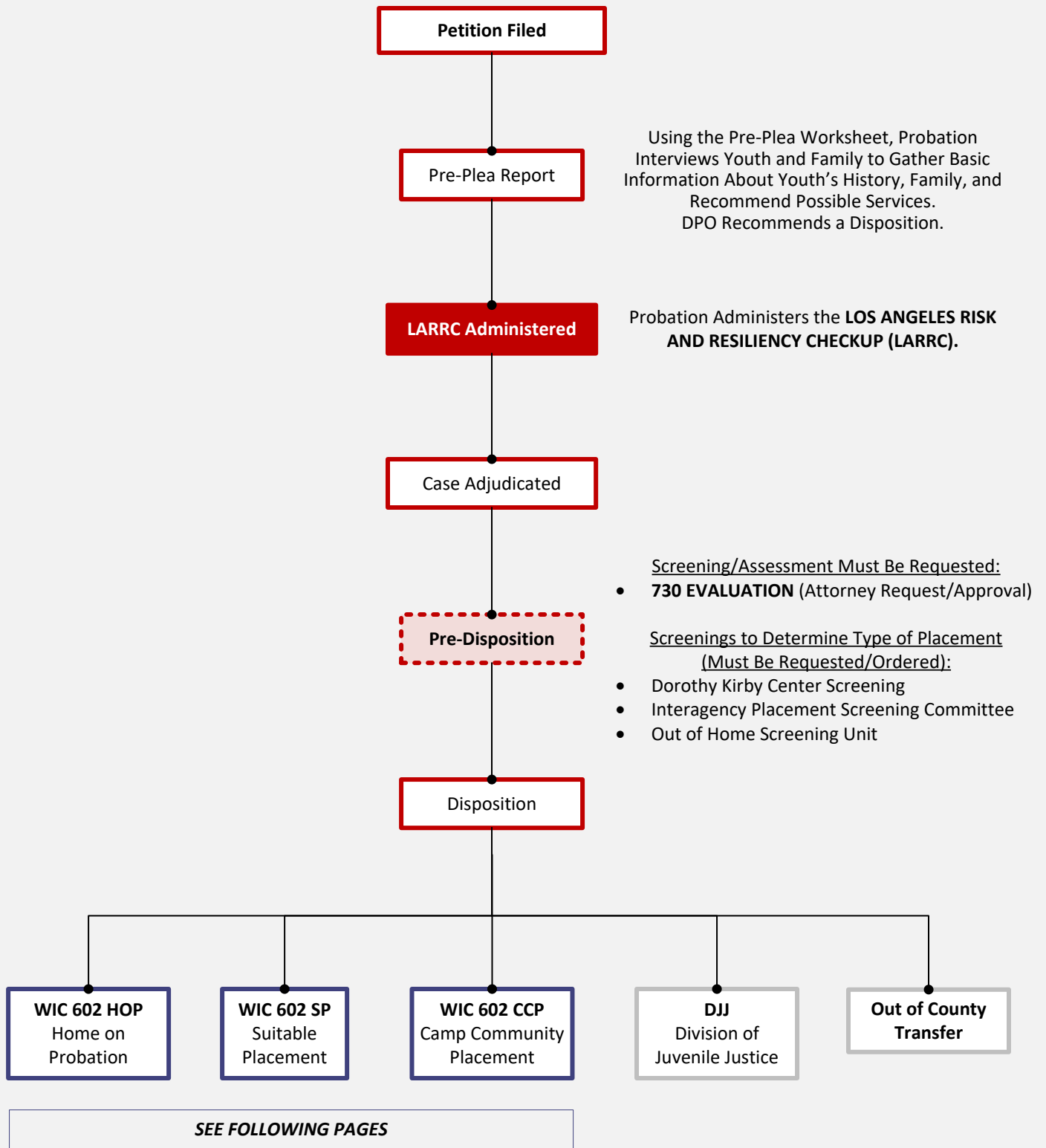


* LAUSD is Co-Located in the Courts: Youth Can Be Referred to PSA Counselors Who Will Work With the Youth and Family To Place Youth in School in the Community. The **COMPREHENSIVE ACADEMIC ASSESSMENT (CAA)** is Administered.

USE OF SCREENING AND ASSESSMENT TOOLS IN THE PROBATION SORTING PROCESS (DIVERSION)



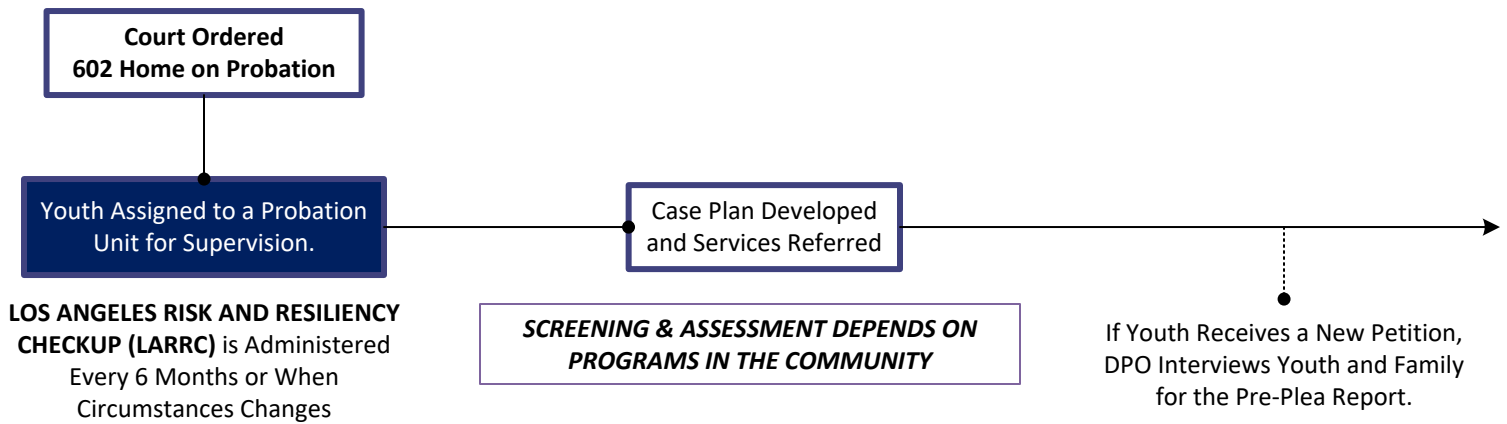
USE OF SCREENING AND ASSESSMENT TOOLS IN CASES PETITIONED TO COURT



USE OF SCREENING AND ASSESSMENT TOOLS IN FORMAL PROBATION SUPERVISION

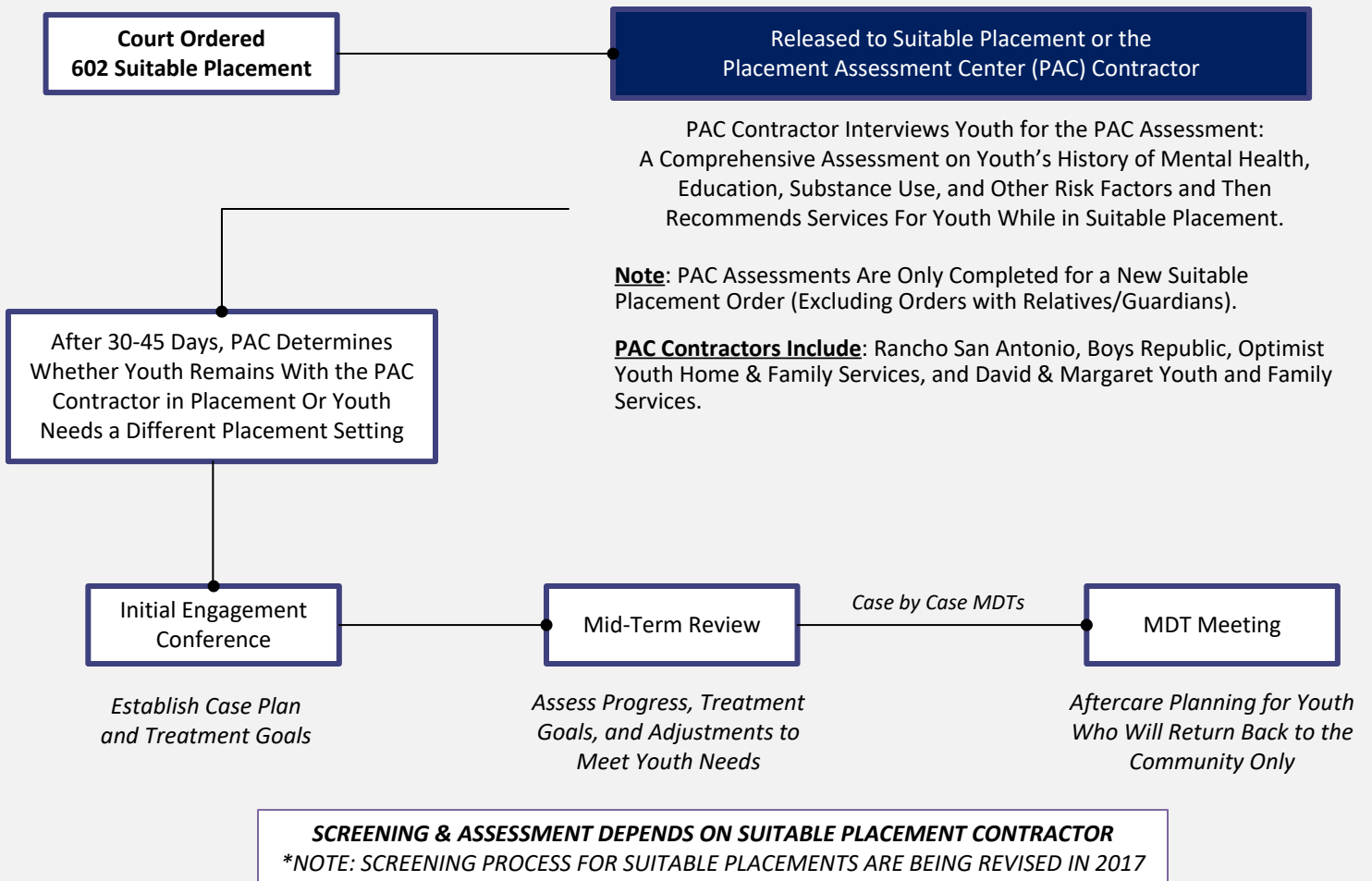


HOME ON PROBATION



*PROBATION UNITS INCLUDE: REGULAR SUPERVISION - SCHOOL-BASED SUPERVISION - 241.1 DUAL SUPERVISION UNIT - CHILD TRAFFICKING UNIT - INTENSIVE GANG PROGRAM SUPERVISION - PLACEMENT COMMUNITY TRANSITION PROGRAM - CAMP COMMUNITY TRANSITION PROGRAM

SUITABLE PLACEMENT



USE OF SCREENING AND ASSESSMENT TOOLS IN FORMAL PROBATION SUPERVISION



CAMP COMMUNITY PLACEMENT

